

SYNTECHTRON

Vibratory Equipment Specialists

Syntron[®] High Stroke Model FV Electromagnetic Vibratory Feeders

Bulk Material Feeding with full range control

Electromagnetic feeders have always been the best for the job. The Syntechtron range of Syntron High-Stroke machines introduce flexibility in use and eliminates the problems commonly found with less advanced electromagnetic feeders. Feeders operating at 33Hz provide important benefits in many areas of feeder operation.

Improved Feed Rate

A lower operating frequency means that the feeder can vibrate at a higher stroke. The feed rate of feeders operating at 33Hz are improved by at least 30% of those operating at 50Hz and match most mechanical feeders.

Greater Head Load

The high power obtainable from an electromagnet operating well below saturation means greater power for a given size of drive.

Quieter Operation

The lower frequency of vibration means there is a minimum of 8dB(A) reduction in noise level compared with a similar 50Hz Machine.

Improved Feeding of Material

High-Stroke feeders provide vibrations which penetrate material far into the hopper above them, loosening stubborn material and moving fine, powdery material at high velocity. This eliminates aeration problems that result from using high frequency feeders with shallow drive angles.

Wider Range

Feeders are available in much larger sizes and screening operations like grizzlies have dramatically more effect at a higher stroke. This is beneficial to the user as the results are smaller, quieter machines for a given capacity. Feeders can also be supplied with twin and dual drives for even higher capacities.

Dependable, flexible control sets Syntron feeders apart from other feeding and conveying equipment. Feed rates are easily adjusted and response is instantaneous. Control devices can be supplied for integration with systems using external signals from automatic sensing devices in instruments. Special control arrangements are also available for selecting and sequencing a group of feeders.

Syntron Heavy-Duty Electromagnetic Feeders require little maintenance as the design eliminates mechanical wearing parts as there are no cams, eccentrics, belts or bearings; thus reducing parts replacement and the need for lubrication. All movement is confined to a stack of heavy duty leaf springs. Electrical components such as the coil assembly will provide years of service under normal operating conditions. Dust tight drive units are standard on all models. Also available are drive units for use in Class 1 (Zone 1) **hazardous areas** with associated approval as fixed apparatus in coal or shale mines.

Picture: *FVD540 Feeder and Hopper assembly with motorised gate.*



SYNTECHTRON

Ph: 02 9679 7022

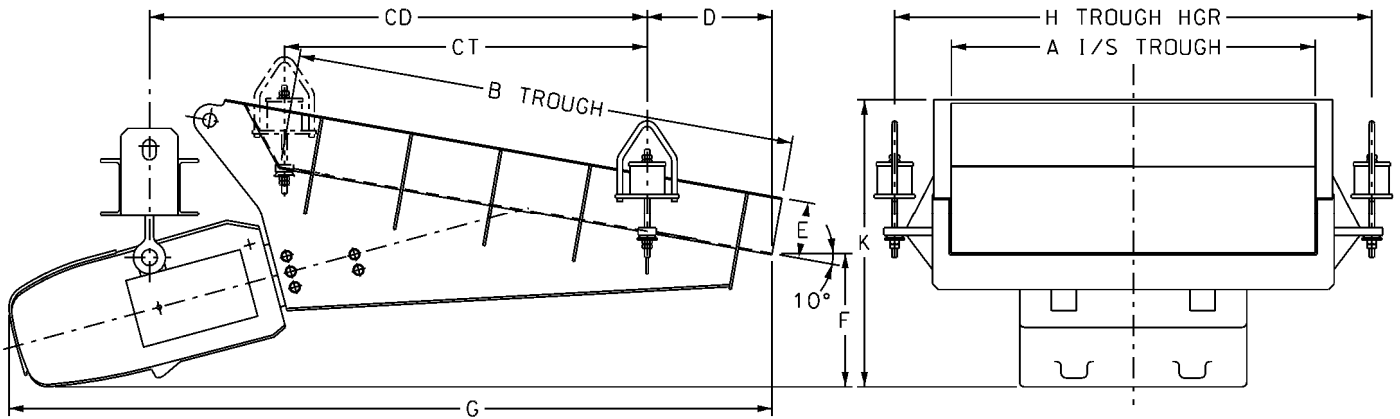
Fax: 02 9679 7033

AUSTRALIAN OWNED

Email: sales@syntechtron.com

Website: www.syntechtron.com

High Stroke Model FV Electromagnetic Vibratory Feeders



MODEL	A	B	CD	CT	D	E	F	G	H	K
FV440 (1)	900	1400	1175		555	180	430	2205	1200	880
FV440 (2)	1000	1800		1200	575	180	480	2340	1300	1010
FV480 (1)	1200	1600	1330		591	200	590	2430	1600	1000
FV480 (2)	1300	2200		1600	570	200	520	2660	1800	1150
FV540 (1)	1400	1800	1583		660	250	674	2840	1900	1100
FV540 (2)	1600	2500		1500	660	250	630	3220	2100	1275
FV650 (1)	1600	2000	1800		610	250	725	3350	2200	1300
FV650 (2)	2000	3000		2000	955	250	700	3650	2500	1450
FV890 (1)	2200	2500	2425		725	250	750	3775	2800	1475
FV890 (2)	2500	3400		2555	785	250	765	4055	3000	1615
FV990 (1)	2200	3000	2725		850	300	850	4335	2800	1720
FV990 (2)	2500	4000		2550	1385	300	865	4720	3100	1910

All dimensions are in mm. Have dimensions certified for installation purposes.

- (1) Standard trough with abrasion resistant liners suitable for aggressive materials.
- (2) Standard trough with stainless steel contact surfaces.

MODEL RANGE	FV440	FV480	FV540	FV650	FV890	FV990
Machine weight with standard trough	1300 kg	2000 kg	3400 kg	5000 kg	7500 kg	9200 kg
Rated current ** at 415V 50Hz Supply	30 Amps	40 Amps	60 Amps	75 Amps	140 Amps	175 Amps
Controller Model	CT32	CT50	CT63	CT75	CT140	CT175
Nominal Capacity - *						
Crushed Stone (1.6t/m ³)	400 t.p.h.	650 t.p.h.	900 t.p.h.	1400 t.p.h.	2000 t.p.h.	2500 t.p.h.
Coal (0.8t/m ³)	450 t.p.h.	700 t.p.h.	1100 t.p.h.	1500 t.p.h.	2250 t.p.h.	2750 t.p.h.

* Feed rate based free flowing material, standard lined trough at 10° downslope running at maximum stroke and when correctly installed under a Syntechtron approved hopper outlet.

** Larger units are custom built to the application and ratings may vary.

Due to our policy of continuous improvement in product design and manufacture we reserve the right to change specifications and dimensions without notice. For correct and safe operation **Syntechtron** process equipment must be installed, operated and maintained in accordance with our instruction manual.