

SYNTECHTRON

Vibratory Equipment Specialists

Syntron® Electromagnetic Screening Feeders



Syntron Electromagnetic Screening Feeders are ideal for the sizing, separating, de-dusting and dewatering of a wide range of products and materials.

Syntechtrons range of Screening Feeders offers various screening materials and apertures to suit all duty requirements and combine high frequency / low amplitude operation.

This optimises the screening of finer as well as reducing degradation of the product. All Feeders are available with Electronic Controllers allowing the Feeder to be controlled at the precise vibration amplitude to ensure efficient screening of the product.

Benefits of using Syntron Electromagnetic Screening Feeders include:

- Complete controllability using Syntechtron Electronic Controllers
- Continuous or intermittent operation – ideal in batching processes
- Low maintenance
- Available with stainless steel decks & screen materials
- Full sanitary finishes available
- Low noise
- Base or Suspension mounted units available
- Quick release screen dressings available
- Variety of Screen sizes and dressings
- Screens can also operate as Feeders
- Single, double & triple deck units available
- Can be designed with covers, inlets & downspouts
- Drives can be above or below deck to best suit the application



SYNTECHTRON

Ph: 02 9679 7022

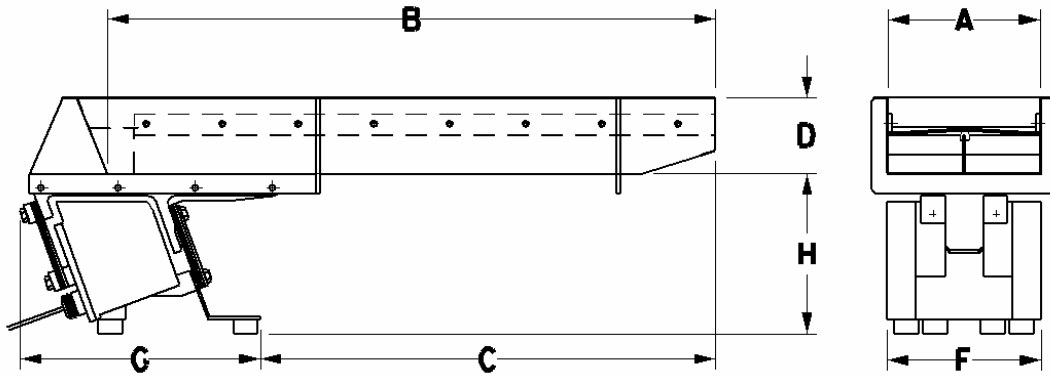
Fax: 02 9679 7033

AUSTRALIAN OWNED

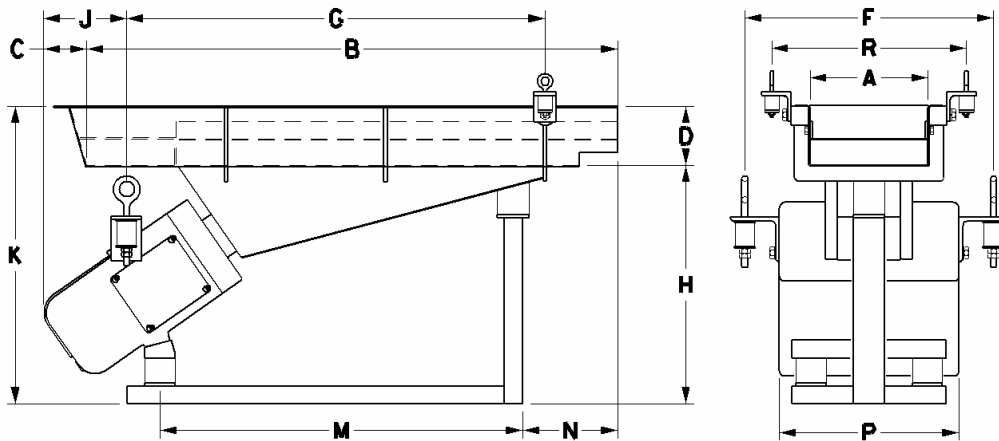
Email: sales@syntechtron.com

Website: www.syntechtron.com

Electromagnetic Screening Feeders



Model	A	B	C	D	E	F	G	H	Max Current	Weight
SFT01	75	380	250	75	230	127	230	150	0.45 A	15 kg
SFT01	150	250	120	75	230	127	230	150	0.45 A	15 kg
SBF01	150	450	300	75	245	167	275	170	1.0 A	25 kg
SBF01	200	300	180	75	245	167	275	170	1.0 A	25 kg
SBF2	200	600	380	75	290	203	321	215	2.0 A	35 kg
SBF2	200	800	500	75	290	203	321	215	2.0 A	35 kg



Model	A	B	C	D	F	G	H	J	K	M	N	P	R	Max Current	Weight
SF152	150	610	135	75	305	505	330	115	460	405	160	222	273	1.5 A	45 kg
SF152	200	450	210	75	305	460	330	115	460	405	85	222	324	1.5 A	45 kg
SF212	200	915	125	75	380	630	400	140	530	480	355	305	330	2.5 A	110 kg
SF212	305	610	275	75	380	620	400	140	530	480	200	305	432	2.5 A	110 kg
SF22	305	1065	203	127	502	780	640	210	840	850	237	500	432	4.0 A	275 kg
SFH22	450	1200	203	200	502	780	640	210	840	850	370	500	575	5.0 A	330 kg

All dimensions are in mm. Have dimensions certified for installation purposes.

All Feeders are 240 Volts (standard) except for the SFH22 (415V). Most Feeders can be supplied for 415 V operation for specific applications.

For controller details refer separate sheet

Due to our policy of continuous improvement in product design and manufacture we reserve the right to change specifications and dimensions without notice. For correct and safe operation **Syntechtron** process equipment must be installed, operated and maintained in accordance with our instruction manual.

ESF10

SYNTECHTRON

Ph: 02 9679 7022

Fax: 02 9679 7033

AUSTRALIAN OWNED

Email: sales@syntechtron.com

Website: www.syntechtron.com