

SYNTECHTRON

Vibratory Equipment Specialists

Syntron® Small Light Capacity Electromagnetic Vibratory Feeders

Model FT0CR

0.5 tonnes per hour*

Light capacity model FT0CR with standard 40mm x 300mm trough has a maximum capacity of 500kg per hour. This dependable feeder is ideal for applications demanding top performance at budget prices. Common applications include metering small quantities of dry materials or conveying small parts. Tuning procedures have been simplified as they are performed externally.



Model FT01

2 tonnes per hour*



Model FT01 with standard 80mm x 460mm trough has a maximum capacity of 2 tph. This unit is designed for simple field adjustment as all tuning is performed externally.

Model F010

4 tonnes per hour*

The F010 with standard 125mm x 500mm trough is designed with a dust tight electromagnetic drive and has a maximum capacity of 4 tph.



SYNTECHTRON

Ph: 02 9679 7022

Fax: 02 9679 7033

AUSTRALIAN OWNED

Email: sales@syntechtron.com

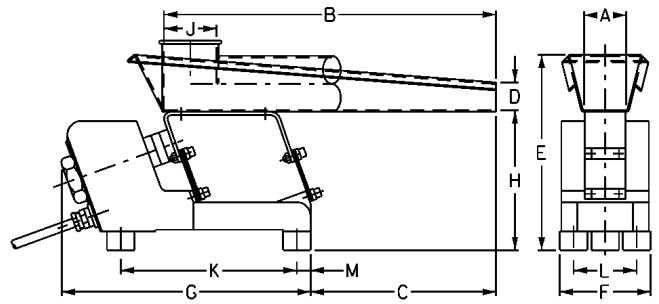
Website: www.syntechtron.com

Small Light Capacity Electromagnetic Vibratory Feeders

Model FT0CR

0.5 tonnes per hour *

Approx Power Consumption RC (240V 50Hz)	18 Watts
Approx Current Input	0.3 Amps
Approx Net Weight	7 kg
Approx Shipping Weight, Feeder & Controller	10 kg
Max Trough Mass	2 kg
Max Trough Length	300 mm

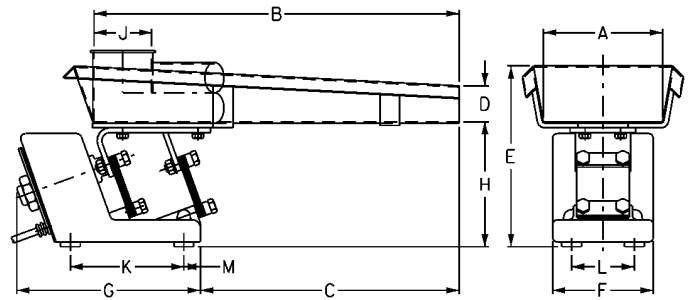


Trough Type	A	B	C	D	E	F	G	H	J	K	L	M
Standard Flat Pan	40	300	165	25	172	85	220	120	-	159	57	13
Specific Flan Pan	50	200	65	25	172	85	220	120	-	159	57	13
Specific V-Shape	-	300	150	25	151	85	220	120	-	159	57	13
Specific Tubular	25 Ø	300	150	-	161	85	220	120	20 Ø	159	57	13

Model FT01

2 tonnes per hour *

Approx Power Consumption RC (240V 50Hz)	30 Watts
Approx Current Input	0.45 Amps
Approx Net Weight	15 kg
Approx Shipping Weight, Feeder & Controller	18 kg
Max Trough Mass	3.5 kg
Max Trough Length	460 mm

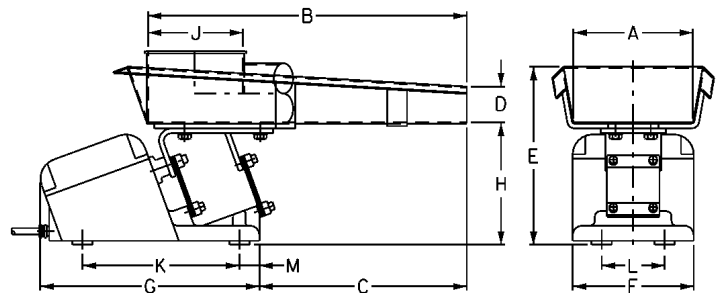


Trough Type	A	B	C	D	E	F	G	H	J	K	L	M
Standard Flat Pan	80	460	330	45	220	130	230	150	-	143	79	21
Specific Flat Pan	100	460	330	45	220	130	230	150	-	143	79	21
Specific Flat Pan	150	300	170	45	220	130	230	150	-	143	79	21
Specific V-Shape	-	460	330	50	225	130	230	150	-	143	79	21
Specific Tubular	50 Ø	460	330	-	229	130	230	150	45 Ø	143	79	21
Specific Tubular	75 Ø	460	330	-	254	130	230	150	70 Ø	143	79	21

Model F010

4 tonnes per hour *

Approx Power Consumption RC (240V 50Hz)	75 Watts
Approx Current Input	1.25 Amps
Approx Net Weight	22 kg
Approx Shipping Weight, Feeder & Controller	25 kg
Max Trough Mass	5.5 kg
Max Trough Length	600 mm



Trough Type	A	B	C	D	E	F	G	H	J	K	L	M
Standard Flat Pan	125	500	330	50	230	155	275	150	-	197	79	25
Specific Flat Pan	100	500	330	50	230	155	275	150	-	197	79	25
Specific Flat Pan	125	600	380	50	230	155	275	150	-	197	79	25
Specific Flat Pan	150	460	385	50	230	155	275	150	-	197	79	25
Specific Tubular	75	460	305	50	290	155	275	150	70 Ø	197	79	25

All dimensions are in mm. Have dimensions certified for installation purposes.

* Feed rate based on free flowing granular material @ 1600kg/m³ on standard flat pan.

For controller details refer separate sheet

Due to our policy of continuous improvement in product design and manufacture we reserve the right to change specifications and dimensions without notice. For correct and safe operation **Syntechtron** process equipment must be installed, operated and maintained in accordance with our instruction manual.

SLCC10

SYNTECHTRON

Ph: 02 9679 7022

Fax: 02 9679 7033

AUSTRALIAN OWNED

Email: sales@syntechtron.com

Website: www.syntechtron.com