

SYNTECHTRON

Vibratory Equipment Specialists

RVF Dual Rotary Vibratory Feeders



This range of Syntechtron RVF Model Feeders incorporates rotary vibratory motors generally mounted on each side of the feeder trough as to provide maximum effect near the centre of mass of the feeder. This results in more even front and rear support loads which improves control, and allows for easy access for operators to make adjustments and perform maintenance. The construction of RVF feeders results in a simple, strong economical machine.

Correct selection of the feeder models to suit specific applications is assisted by utilizing Syntechtrons unique computer design program which ensures all construction is in line with acceptable stresses and that the unit is suitable for a specified duty and installation requirements.

Syntechtron RVF Feeders are available in a variety of sizes to meet specified duty requirements.

All feeders are backed by Syntechtron, the Australian Vibratory experts with over 40 years experience in providing first class vibratory feeders.

For special requirements feeders can be provided with extra features or auxiliary units to meet the most demanding applications such as:-

- Grizzly/Screening Sections
- Variable rate controllers
- Suspension or Base Mounted arrangements
- Safety Slings and Beams
- Inlet and Discharge Chutes
- Support Frames
- Hopper Outlets
- Finite Element Analysis
- Dust Sealing
- Covers

Please contact Syntechtron to speak with our highly experienced sales engineers for assistance in selecting the correct vibratory feeder to meet your specifications.

Picture: Base Mounted RVF1423 (Pan size 1400mm wide x 2300mm long)

SYNTECHTRON

Ph: 02 9679 7022

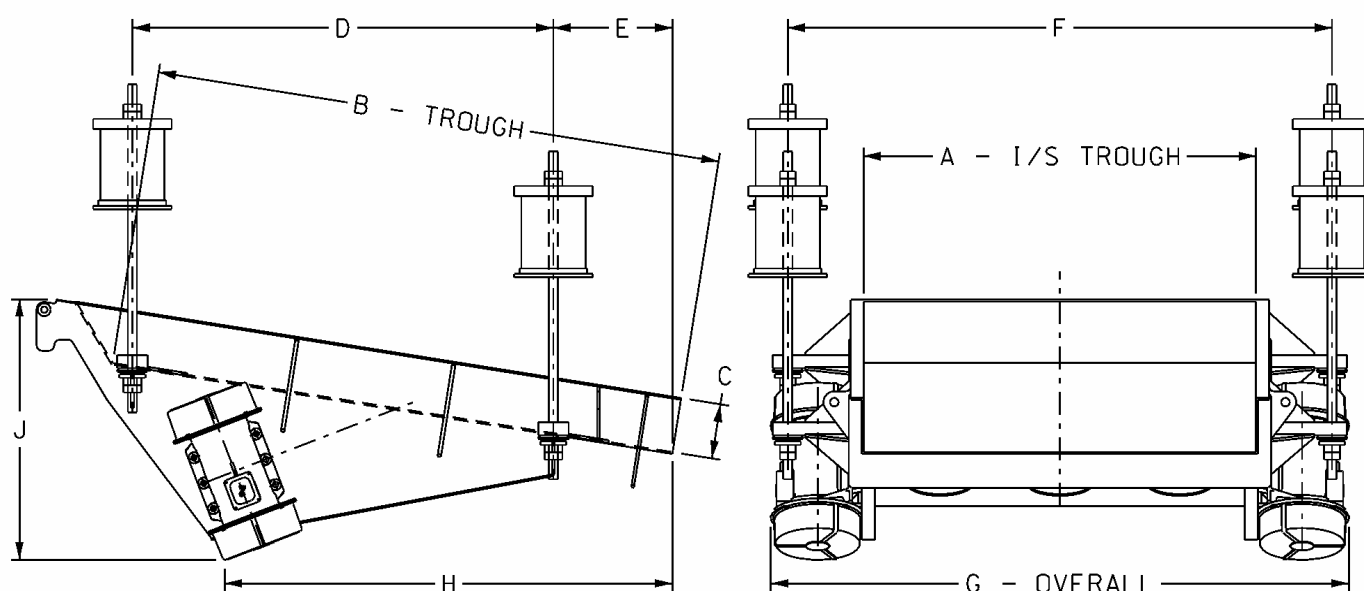
Fax: 02 9679 7033

AUSTRALIAN OWNED

Email: sales@syntechtron.com

Website: www.syntechtron.com

RVF Dual Rotary Vibratory Feeders



Model	A	B	C	D	E	F	G	H	J	Cap*
RVF0514	500	1400	100	1190	190	900	990	1366	756	160
RVF0615	600	1500	125	1287	190	1000	1088	1482	813	210
RVF0630	600	3000	150	2775	190	1080	1168	2223	1002	200
RVF0712	750	1200	150	990	190	1150	1238	1296	787	200
RVF0715	750	1500	150	1290	190	1150	1318	1536	880	300
RVF1015	1000	1500	150	1190	240	1480	1570	1530	880	375
RVF1018	1000	1800	150	1485	240	1480	1570	1785	972	400
RVF1020	1000	2000	150	1733	240	1480	1570	1785	950	500
RVF1040	1000	4000	200	3715	240	1600	1687	2775	1175	500
RVF1216	1200	1600	150	1287	240	1680	1768	1630	940	500
RVF1218	1200	1800	150	1485	240	1680	1768	1720	950	550
RVF1220	1200	2000	200	1683	240	1680	1887	1870	1005	600
RVF1518	1500	1800	200	1485	240	2100	2187	1940	1090	700
RVF1520	1500	2000	200	1683	240	2100	2187	2030	1106	800
RVF1524	1500	2400	200	2080	240	2100	2207	2015	1120	950
RVF1540	1500	4000	250	3714	240	2180	2322	3056	1470	800
RVF1621	1600	2100	200	1782	240	2200	2311	2140	1200	900
RVF1625	1600	2500	200	2180	240	2200	2311	2350	1260	1000
RVF1823	1800	2300	200	2080	240	2400	2510	2126	1190	1200
RVF1827	1800	2700	250	2377	240	2400	2622	2375	1287	1350
RVF2025	2000	2500	300	2180	240	2680	2818	2314	1335	1350
RVF2030	2000	3000	250	2675	240	2680	2822	1768	1476	1500
RVF2224	2200	2400	250	2080	240	2880	3022	2524	1447	1450
RVF2228	2200	2800	250	2476	240	2880	3141	2762	1508	1700
RVF2230	2200	3000	300	2674	240	2880	3141	2856	1572	1850
RVF2232	2200	3200	300	2872	240	2880	3141	2945	1588	1900
RVF2536	2500	3600	300	3119	380	2990	3445	3255	1706	2500

The above feeder data is based on 415 Volt 50 Hertz Supply.

* Nominal feed rate based on free flowing coal with trough at 8° down slope, running at maximum permissible stroke and when correctly installed under a Syntechtron approved hopper outlet

Due to our policy of continuous improvement in product design and manufacture we reserve the right to change specifications and dimensions without notice. For correct and safe operation **Syntechtron** process equipment must be installed, operated and maintained in accordance with our instruction manual.

RVFC10

SYNTECHTRON

Ph: 02 9679 7022

Fax: 02 9679 7033

AUSTRALIAN OWNED

Email: sales@syntechtron.com

Website: www.syntechtron.com